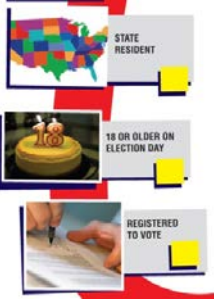




SOUTH DAKOTA



YOU CAN VOTE



CHECK REGISTRATION

- Voter Registration Form:
- <https://sdsos.gov/elections-voting/assets/FinalVoterRegistrationForm11.16.12.pdf>
- County Auditor's Office:
- <https://sdsos.gov/contact-us/county-auditors.aspx>

WAYS TO VOTE



EARLY VOTING

South Dakota voters may vote early in person at the county auditor's office

POLLING PLACE LOCATOR

- <https://sos.sd.gov/Elections/VLogin.aspx>
- County Auditor's Office

WAYS TO REGISTER



BY MAIL

Complete and mail the Voter Registration Application to the auditor in your county of residence

LOCAL ELECTIONS OFFICE

In person at your county auditor's office; city finance office; driver's license station; Public assistance agencies providing food stamps, TANF or WIC; Department of Human Services

ELECTION DATES

PRIMARY ELECTION:

June 5, 2018

Voter Registration Deadline - **May 21, 2018**
Early voting begins - **April 20, 2018**

GENERAL ELECTION:

November 6, 2018

Voter Registration Deadline- **October 22, 2018**
Early voting begins - **September 21, 2018**



VOTER IDENTIFICATION

SOUTH DAKOTA DOES HAVE A PHOTO ID REQUIREMENT

All voters who appear at a polling place for the first time must show proof of ID, including:

- Driver's license or non-driver ID card
- U.S government photo ID
- U.S. Armed Forces ID, U.S passport
- Student photo ID from a South Dakota high school or South Dakota accredited institution of higher education
- Tribal photo I.D, photo ID issued by an agency of the U.S. government



If you do not have a photo ID or forget to bring your ID, you can sign a personal ID affidavit and still be allowed to vote.

VOTER REGISTRATION



ID TO REGISTER

South Dakota Driver License Number, or the last four numbers of your social security number

South Dakota primaries are Closed for Republicans and Semi-closed for Democrats

REGISTRATION DEADLINE



BY MAIL / IN PERSON

15 days before an election

PROBLEMS OR QUESTIONS



Disability Rights South Dakota

605-224-8294

1-800-658-4782

www.drSDLaw.org